



AFTER HOURS CONVERSATION:

**NIH NEXT GENERATION RESEARCH INITIATIVE:
TRAINING FUTURE BIOMEDICAL RESEARCHERS**

AFTER HOURS CONVERSATION:

**NIH NEXT
GENERATION
RESEARCH
INITIATIVE:**

**TRAINING FUTURE
BIOMEDICAL
RESEARCHERS**

PANELISTS



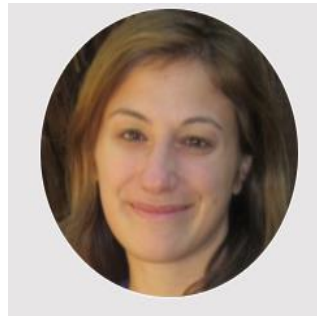
Michael Lauer, M.D.,

- Deputy Director for Extramural Research, NIH



Kay Lund, Ph.D.,

- Director, Division of Biomedical Research Workforce, Office of Extramural Workforce, NIH




Shoshana Kahana, Ph.D.,

- NIH Research Training Policy Officer, Office of Extramural Workforce, NIH

IMPORTANT RESOURCES

- NGRI Website: <https://grants.nih.gov/ngri.htm>
- NGRI Policies Impacting Early Career Investigators: <https://grants.nih.gov/policy/early-investigators/index.htm>
- Programs for Early Career Investigators: <https://researchtraining.nih.gov/career/early-career>
- FAQs: <https://grants.nih.gov/faqs#/early-investigators.htm>
- Information on ESI Extension Requests:
 - <https://www.youtube.com/watch?v=2Fr9gN7cymQ&feature=youtu.be>
- COVID-related Extensions:
 - <https://nexus.od.nih.gov/all/2020/04/09/can-esi-status-be-extended-due-to-disruptions-from-covid-19/>

Early Stage Investigator (ESI) Status		Will I lose ESI status if...
What is ESI? NIH defines an <i>Early Stage Investigator (ESI)</i> as a Program Director / Principal Investigator (PD/PI) who has completed their terminal research degree or end of post graduate clinical training, whichever date is later, within the past 10 years and who has not previously completed successfully as PD/PI for a substantial NIH independent research award. What is the benefit of having an ESI status? ESI applications with mentorship scores will be prioritized for funding by the institute or center receiving the application. How can I check if I have an ESI status? Check the Education section of your eRA Commons profile. ESI status is determined automatically by functionality built into eRA Commons. The status is based on the investigator's record of receiving NIH grants and the completion date of post graduate terminal research degree or the completion of post graduate clinical training entered into the eRA Commons personal profile. Where can I find out more? You can find more information here: https://grants.nih.gov/policy/early-investigators/index.htm Related NIH/OD posts: https://nexus.od.nih.gov/all/tags/esi/ FAQs: https://grants.nih.gov/policy/early-investigators/faqs.htm  National Institutes of Health U.S. Department of Health and Human Services Created 4/5/2020	YES	• It has been more than 10 years since my terminal research degree or end of post graduate clinical training and I have not experienced situations that qualify for an ESI extension request. (See these FAQs about ESI Extensions .)
	MAYBE	• I am the PD/PI (or multi-PD/PI) on an NIH award. • Yes, if you successfully completed as a PD/PI for a substantial independent research award. • No, if you are the PD/PI of an award, on our list of smaller grants & awards that maintain ESI status. • I am the PD/PI (or multi-PD/PI) on a multi-project award. • Yes, if you successfully completed as a PD/PI for the overall multi-project application. • No, if you led a component but were not the PD/PI of the overall application.
	NO	• I'm a Co-Investigator on the grant. (NIH only recognizes senior/key with the role PD/PI as principal investigators.) • I'm the PD/PI on a subaward or subcontract. • I became the PD/PI due to a change of investigator action. (If you did not complete successfully as the PD/PI for a substantial NIH independent research award you won't lose status.)

