



“International Research Collaboration, Faculty Development Programs, and Role of International Offices”

Jane G. Payumo and Erin-Kae Rice

Washington State University, Pullman, WA

2014 NORDP Annual Research Development Conference
Portland, OR
May 20, 2014

Agenda for this Session

- International offices role in promoting international partnerships and the value of collaboration
- Stronger interaction between University areas, including research and international affairs offices
- Best practices in building international research support
- Learning and insights in managing international collaborations and agreements
- Emerging roles of international offices

The Value of Collaboration

- Encourage cross-fertilization between disciplines
- Provide access to expertise, equipment & resources
- Encourage learning tacit knowledge about a technique
- Combine knowledge for tackling large & complex problems
- Have a positive relationship with *productivity*
- Have a positive relationship with quality & *impact of publication*
- Contribute to prestige or visibility



Rising international collaboration.

An interconnected world.

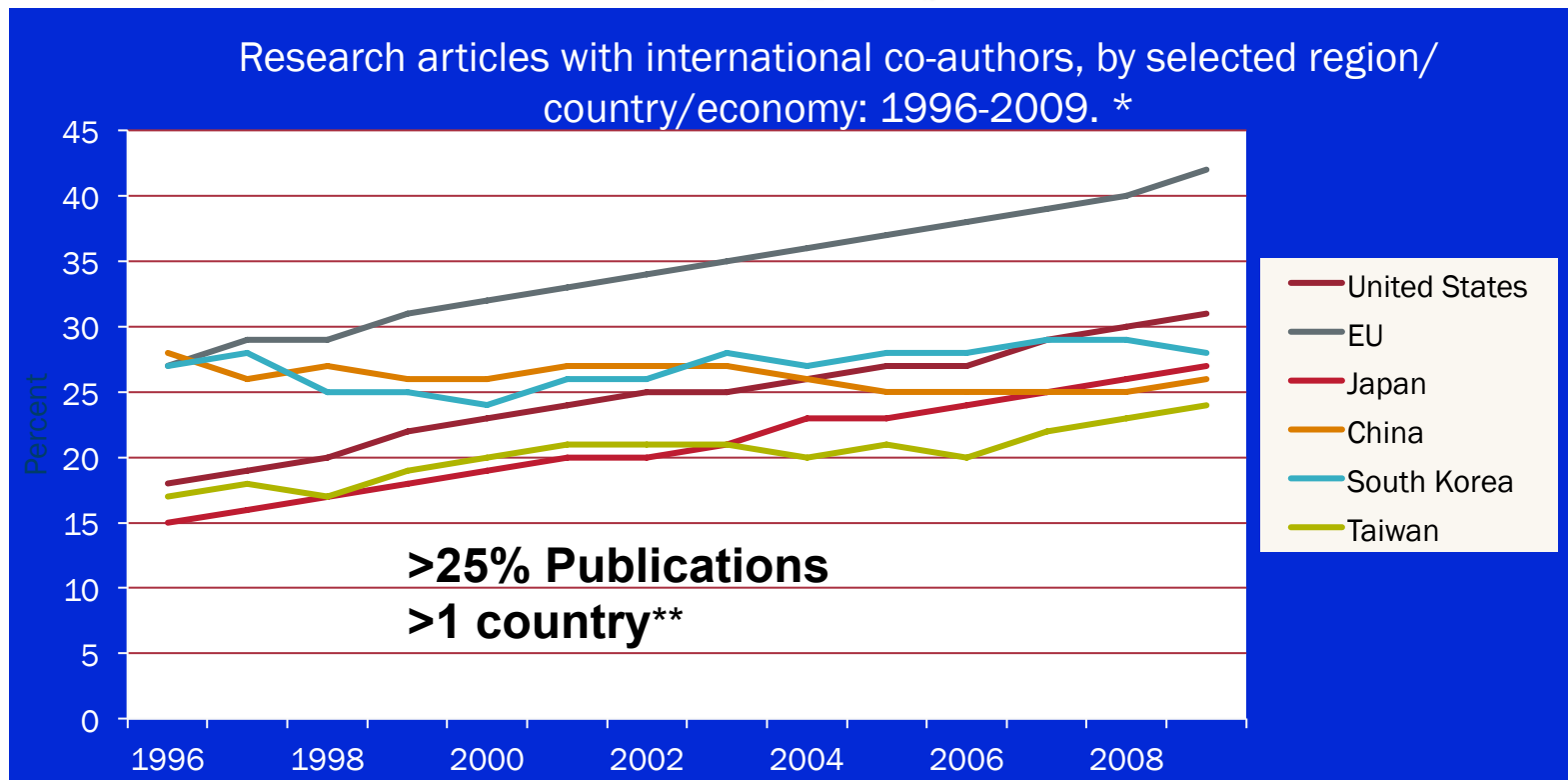
- Solving global challenges
- Globalization and integration of markets and resources
- Mobility of the workforce
- Increased flow of information and communication



Rising international collaboration.

An interconnected world.

S&T Globalization: National Trends and International Comparisons





WASHINGTON STATE UNIVERSITY

INTERNATIONAL PROGRAMS



WSU SEARCH



STUDENTS

FACULTY & STAFF

VISITING SCHOLARS

ALUMNI, FRIENDS & FAMILY

APPLY TO WSU

RESEARCH

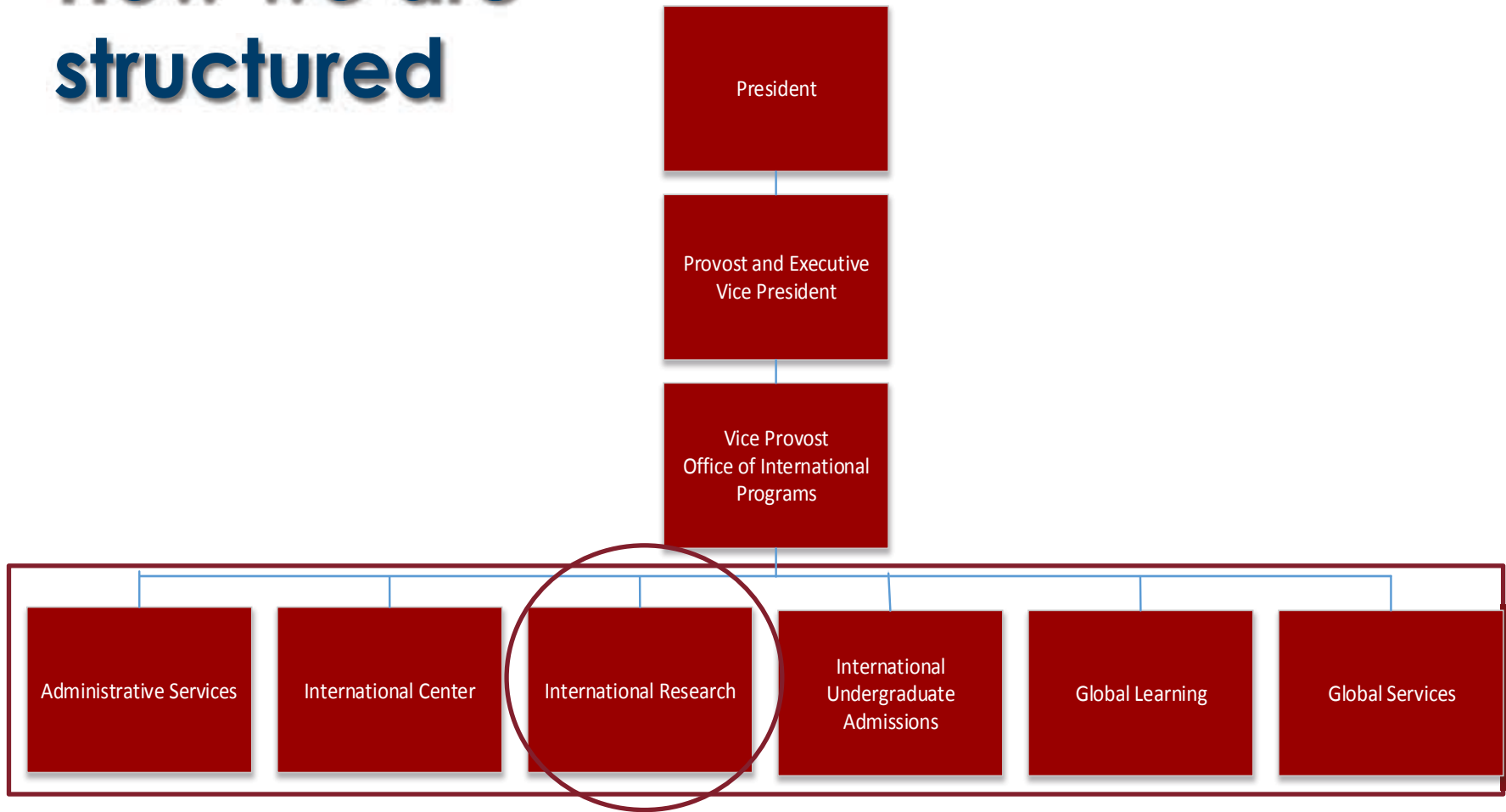
WANT TO GET INVOLVED? MEET NEW PEOPLE, STUDENTS, FACULTY, STAFF, AND/OR LEARN MORE ABOUT IP.

LEARN MORE

Playing a bigger role in promoting international partnerships - WSU Office of International Programs

- We identify funding opportunities.
- We promote faculty programs and interdisciplinary initiatives.
- We facilitate proposal development.
- We cultivate strategic partnerships with WSU partners around the world

How we are structured



Enhancing international research & engagement at WSU



Connecting faculty to international partners with research synergies

A screenshot of a database application window showing a table with multiple columns and rows of data. The interface includes a menu bar and a toolbar.

Creating databases
RFA/Grant mining - networking
Forming interdisciplinary teams
Global Operations Advisory Council
WSU GOLD (non-profit)



Dialogues/consultation
Workshops/Small group meetings with administrators, faculty, staff, and students

Workshop on “Advancing International Research”
October 2, 2012

What matters to our researchers at WSU?



- Research partners who complement their interests and further their program
- Sustaining quality relationships
- Funding and publications
- Staffing with qualified students, post-docs
- Recognition of effort – promotion and tenure
- Personal considerations (e.g. roots abroad, social justice/ entrepreneurship)
- Support (Research office, International office)



Helping faculty establish *foot in the door* in international countries.

- International Research Travel Award
- Small training grants through USDA Borlaug and Cochran programs
- Faculty-led programs and other faculty exchange programs
- Fulbright Fellowship

Enhancing international research & engagement at WSU



U.S. Agency for International Development project in **Indonesia**: A Smart Strategic Coalition for Sustainable Agricultural & Economic Development through research and scientific training in Plant Biotechnology 2012- 2015



Business Executives from the **Philippines**:
U.S. Department of Agriculture award:
Training on Cold Chain Management for
Food Safety and Quality.



U.S. Department of Agriculture International Science & Education award, "Sustainable livestock production practices, biofuels and health: Lessons with **India**

New knowledge, new possibilities

WSU Research Strengths



Food and Agriculture

Contributing to a safe, abundant, and sustainable food and fiber supply



Global Animal Health

Solving global infectious disease challenges



Clean Technologies

Addressing the threats of energy supply, global warming, pollution, and resource depletion



Brain, Behavior, Sleep

Discovering factors that drive human performance



Business

Understanding enterprises and their impact on society



Education

Exploring factors that underlie academic achievement



Energy

Finding new sources of power



Engineering/ Information Technology

Advancing toward a healthy, sustainable future



Environment

Safeguarding our natural resources



Human Health

Flagging threats and fighting disease



Public Policy

Shaping our governing principles



Security

Protecting our nation

Global Animal Health
Food and Agriculture
Clean Technologies
Brain, Behavior, and Sleep
Business
Education
Energy
Engineering and Information Technology
Environment
Human Health
Public Policy
Security

Funding opportunities related to WSU priorities and faculty international research interests



United States Department of Agriculture
Foreign Agricultural Service

e.g. Fellowship Program,
Borlaug Fellowship Program



United States Department of Agriculture
National Institute for Food and Agriculture

BILL & MELINDA
GATES *foundation*

- Agricultural Development
Program



National Science Foundation
WHERE DISCOVERIES BEGIN

e.g. Basic Research to Enable Agricultural
Development (BREAD)



USAID
FROM THE AMERICAN PEOPLE

Insights to international collaborations and agreements

Best Practices – Pre-Award

- Work with faculty and institutional partners
- Bring the team together
- Overall proposal management
- Constant communication and follow through
- Be realistic
- Start early

Insights to international collaborations and agreements

Best Practices - Post Award

- Close monitoring
- Be Flexible
- Communication plan and time lines
- Systems and Processes – internal and external
- Grant vs Cooperative Agreement – level of involvement

Types of International Agreements

- Memorandum of Understanding (MOU)
- Reciprocal Student Exchange Program (RSEP)
- International Undergraduate Articulation Study Abroad Agreement
- Faculty- or Group-led
- International Partnership

- Dual Degree (typically PhD)
- Training or Intern
- English as a Second Language
- Recruitment
- Student/Faculty Exchange
- Others – tailored for specific programming, non-sponsored research programs



Managing International Contracts & Agreements

Ongoing initiatives:

- Established on-line database and tracking – went from paper files to electronic, still improving processes (internal approvals, tracking, timing).
- Established policies and procedures – within IP and at Institutional level, updated policies and procedures and other on-line resources.
<http://ip.wsu.edu/IP-research/agreements/home.html>
- Established templates -
<http://ip.wsu.edu/IP-research/agreements/templates.html>
- Created a link from our internal database to external agreements list for faculty/staff/partner resource.
<http://ip.wsu.edu/ip-research/agreements/list.html>
- Visual Compliance checks on all partners – export control resource through on line eCustoms portal.
<https://www.visualcompliance.com/logon.html>

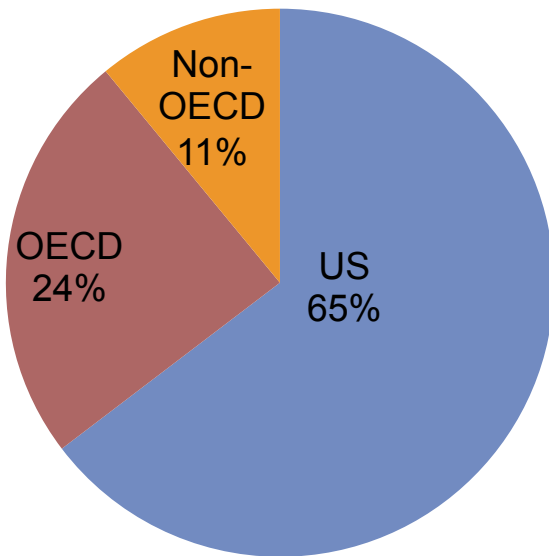
Developing more sustainable and long-term collaborations

- Level of interest to a wide segment of WSU faculty and students.
- Faculty members or units willing to take responsibility for the successful implementation of the partnership
- Degree to which opportunities benefit the mission and priorities of the department, college and University
- Enhancement of comprehensive internationalization at WSU
- Degree to which the proposed contract creates/provides access to resources, whether US or international human, fiscal or other
- Degree to which opportunities are provided that are not otherwise available for students, faculty, and programs
- Adherence to WSU's academic requirements
- Ability of the University to meet the obligations, particularly financial obligations, of the agreement

Washington State University

Profiling department activities

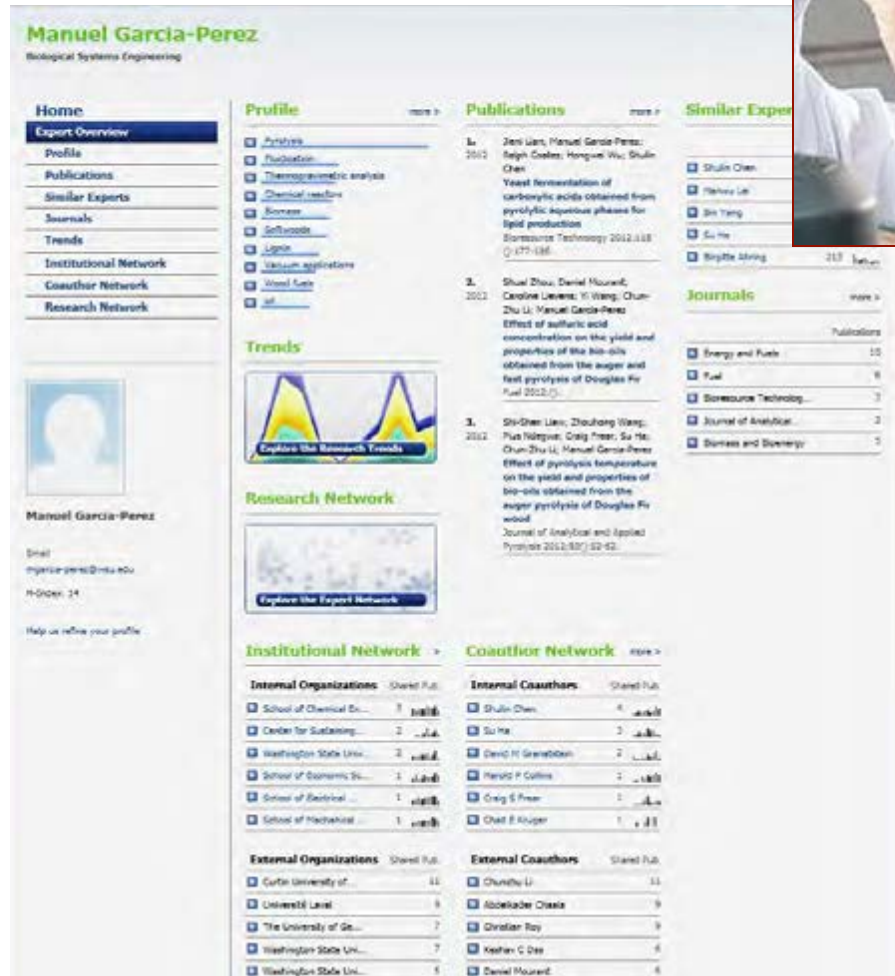
WSU publications in plant science.



OECD vs non-OECD countries. 2002-2012.

* Organization for Economic Cooperation and Development

Washington State University Profiling faculty activities



73% of Manuel's publications
co-authored with international
collaborators

http://www.experts.scival.com/wsuvexpertNetwork.asp?n=Manuel+Garcia%2DPerez&u_id=87



WSU-China Connection



Top 10 WSU co-authors, 2008-2012 (Source: SciVal Spotlight)

1. Northwest Agriculture and Forestry University
2. Chinese Academy of Sciences
3. Tsinghua University
4. China Agricultural University
5. Hohai University
6. Peking University
7. Beijing Agricultural University of Chemical Technology
8. Chinese Academy of Agricultural Sciences
9. Jiangnan University
10. Nanjing Agricultural University

Opportunities

1. More networking, sharing of evidence-based practices, shared equipment, interdisciplinary cross-fertilization;
2. More universities focused on international productivity, quality and impact of publications (e.g. NSF-WSU project)
3. More demand for student & faculty exchanges
4. More....

Challenges

1. Collaboration across campuses
2. Requires extra effort, adaptability and commitment
3. Longevity & stability of programming and programming criteria
4. Creating successful, long-term collaborations
5. Streamlining processes
6. Quality vs. Quantity
7. Meeting all the expectations and standards

Survey Questions or Questions for open discussion/ audience participation

- What are your universities doing to promote international collaborations?
- How do you think can international offices can help?
- What are the issues and challenges of promoting international linkages at your institution? In general?
- What institutional initiatives are needed to further promote global partnerships?